

# intec

PRINTING SOLUTIONS

# LPS215

## Label printing & finishing solution



# GHS

The  
**Globally Harmonized System**  
of Classification and Labeling of Chemicals

# LPS215

## Label printing & finishing solution

The fully specified LPS215 label printing and finishing solution includes everything your business needs to produce high quality labels with ease and efficiency. This superb system includes the LP215 label printer provided with powerful EDGE2Print file manipulation software that resides on a attractive and robust Intec RIP pod solution. To finish the printed labels the system comes complete with the Intec LCF215 label finisher that can cut any shape label, laminate, matrix remove and slit rolls with ease!

The LP215 is the ideal solution for any business that requires high quality, short to medium run label production. Capable of printing onto a vast array of die-cut, matrix removed and retained media, as well as continuous roll substrates. This fantastic Intec solution has the versatility to take even the most demanding label jobs in it's stride.

Once your labels are printed, simply transfer the roll to the LCF215 for finishing. This incredibly compact unit includes easy roll loading for lamination, contour cutting, matrix removal and slitting. Combining robust engineering with precision registration, the LCF215 ensures complete cutting accuracy and finishing performance every time.

Control the entire label printing and finishing workflow from the robust Intec RIP station that comes complete with a fully specified PC and all the necessary software to get the most out of your system. Engineered to the highest standards this rugged steel RIP station has been designed to maximize the efficiency of your print workflow. Featuring adjustable monitor mounts, input device platform and PC housing, the Intec RIP station provides a stable, self contained workstation that is sure to streamline any label environment.

## Label production made easy

The Intec LPS215 is a unique digital label solution that is ideal for short to medium production runs.

- Capable of printing and finishing up to 2,000 labels in less than 20 minutes, the LP215 sets new standards in efficiency and ease of use
- The supplied EDGE2Print software is remarkably easy to use. With time saving features including; drag and drop design layouts and imposition of PDF graphics
- Calculate the full cost of your label run using the integrated Job Costing Module. The module takes into account your toner and other consumables usage as well as label stock costs
- Add iVDP (optional) for printing variable data to expand your print customization offering



## Choose a label solution to suit your specific needs

At Intec we realize that each printing environment and budget is different. Therefore we have tailor made a range of label printing and finishing options that are designed to meet your individual requirements.

All systems are based around the superb LP215 print engine, which is designed with quality, efficiency and ease of use in mind and includes all necessary software to ensure you can get the best labels possible.

Choose from our flagship LPS215 label printing and finishing solution to the LP215 print engine and software only solutions, one of which will be the perfect addition to any label printing workflow.

## LPS215

Our flagship label printing and finishing solution offers you everything you need to print and finish any shaped label!

As explained opposite the LPS215 print and finishing solution comes complete with LP215 label printer with integrated roll feed unwinder mounted on a custom LP215 cabinet with storage facilities and an external rewriter, as well as a complete consumable pack and test roll media to get you up and running instantly! An Intec RIP station and RIP hardware platform with a 19 inch viewing monitor and EDGE2Print label print and management software. Plus the LCF215 label cutting & finishing engine with integrated lamination station, contour cutter, matrix removal station, slitter unit for up to 5 blades\* and finished label rewriter.

\* 3 come standard with the LCF215



## LP215 +

To provide you with a fully integrated, small footprint label printing solution we have created the LP215 PLUS label printing solution. Complete for all on-demand label printing requirements this system ensures you are able to produce high quality color labels quickly and efficiently to help reduce your inventories.

This solution comes complete with LP215 printer and consumables pack with file management and workflow software. The printer resides on a useful label stock storage cabinet and a powerful hardware RIP platform, that is able to accept files from Mac and PC, on the customized RIP pod creating a compact and powerful label printing solution that is truly in a class of it's own.

## LP215

Capable of printing onto a multitude of media substrates the LP215 label printer offers companies a powerful solution for small to medium run production of continuous roll media as well as die-cut matrix removed and retained stocks.

Having a small footprint and compact design ensures the LP215 will easily fit into any busy production environment. Boasting a built in feeder and rewriter as well as cutterblade for end of job cutting, the LP215 is shipped with all the required software to ensure ease of use including a job costing module.

### LP215 supplied with:

Roll unwinder and rewriter, EDGE2Print file management software for easy drag and drop PDF file printing, toner starter kit (cmyk), drum set (cmyk), fuser unit, transfer belt and media test roll to get you up and running quickly!



# LP215

- Print up to 2,000 labels in less than 20 minutes
- Print straight onto polyester, synthetic and standard gloss and matte paper stocks
- GHS approved for drum and chemical labels
- Calculate the full cost of your label run using the integrated Job Costing Module
- Multi-language print jobs and personalized labels using iVDP\*

\* optional software



# LCF215

- Finish your digitally printed labels reliably at impressive speeds of up to 3 meters per minute
- Use DIRECT-CUT, driven through Adobe Illustrator or CorelDraw for contour cutting of rolls into any shaped label
- Laminate labels to provide additional surface protection and light fastness
- Short webbing path for quick and easy removal of waste
- Slitting of printed rolls



Built in reflective sensors enables the system to detect different substrates allowing you to print onto a wide variety of matrix removed labels of differing shapes and sizes and back marked stock.



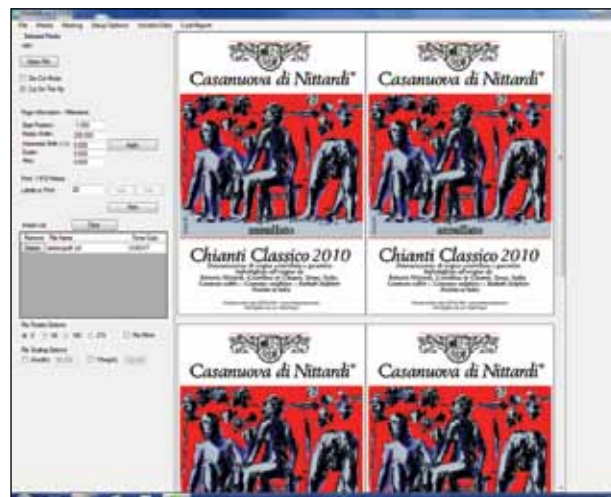
Having a small footprint and compact design ensures the LP215 will easily fit in any busy production environment. Boasting a built in feeder and rewriter as well as cutterblade for end of job cutting, ensuring no need for additional equipment.



The user friendly control panel ensures that you can navigate your way around the menu function with ease.



Laminate your labels for a gloss or matt finish, protecting them from scratching and moisture ingress whilst also improving light fastness and stability.



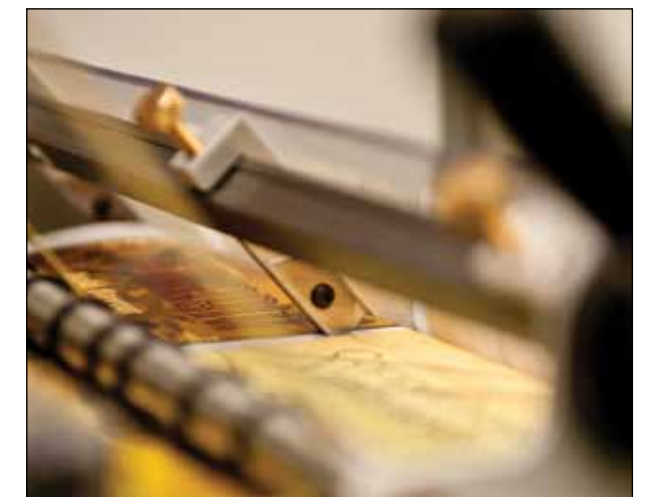
Quickly and easily import PDF artwork into the supplied EDGE2Print workflow, automatically paginating your design to fit your roll width. EDGE2Print gives you complete control over your print job, allowing you to alter gutters, margins and run off.



To understand the full cost of your label run simply generate a cost report using the integrated Job Costing Module. The module takes into account your toner and other consumables usage as well as label stock costs.



Optical sensors read up to 3 registration marks which ensures the best accuracy in the industry.



Slitting blades allow for roll slitting, at any width, with up to 3 blades (standard) and 5 blades (optional).

## GHS, BS5609 and IMDG Certification

The Globally Harmonized System of Classification of Labelling of Chemicals (GHS) is an international system that was created by the United Nations to ensure consistency for the labelling of dangerous goods.

British Marine Standard BS5609 is a requirement for self adhesive drum labels needing International Maritime Dangerous Goods (IMDG) certification for shipment. In order to meet the requirements for sections 1, 2 and 3 of the BS5609 standards, the labels are exposed to artificial weathering, tape removal and abrasion resistance tests to ensure they are capable of withstanding the harshest environments.

Two suitable label stocks have been approved for use with the LP215.\* A white matte PET (Polyethylene terephthalate) with a 3.4 mil layflat liner and secondly a BOPP (Biaxially Oriented Polypropylene Film) 2.6 mil white using permanent acrylic adhesive, but a SCK liner. Both products passed the rigorous testing regime carried out by PIRA (the Print Industry Research Association).

Die-cut labels printed on the LP215 deliver outstanding stability and resistance to water, chemicals, fading and smudges and still remain identifiable for at least 3 months after being immersed in the sea.

\* GHS approved materials from MACtac must be used to be compliant.

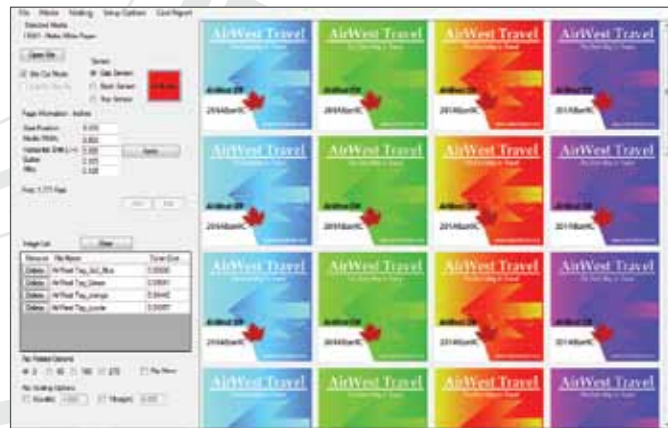


## Software Solutions

### EDGE2Print Software & Certified Media Library

The EDGE2Print label workflow package is a fully featured, easy-to-use software solution designed exclusively for use with the LP215 on demand label printer. The drag and drop, snap to grid layout allows for quick imposition of PDF graphics and combined with quick changeover technology, makes light work of label production.

- User defined layouts and media management
- Conventional or die-cut media layout
- RIP rotation, scaling, mirror imaging and nesting capabilities
- Toner coverage and cost calculator per label and per job
- Multi-up costing for different graphics on the same layout
- Edge to edge label printing on die-cut rolls
- Full color management Harlequin® RIP
- Certified media library includes a wide variety of approved substrates



### iVDP\* Variable Data Printing

iVDP will allow users to expand their print capabilities and further meet customers needs for mass customization in their design and message. The built in Pantone™ library and color management tools allow for clean and crisp high resolution graphics and eliminates the need to pre-print labels.

Users will be able to increase productivity, reduce inventories and decrease lengthy lead times by incorporating variable data printing into their workflow.

- Easy to use WYSIWYG design interface
- Over 4,000 pre-formatted barcodes
- Numerous graphic formats
- Horizontal and vertical sequential layout
- CSV file and data importing



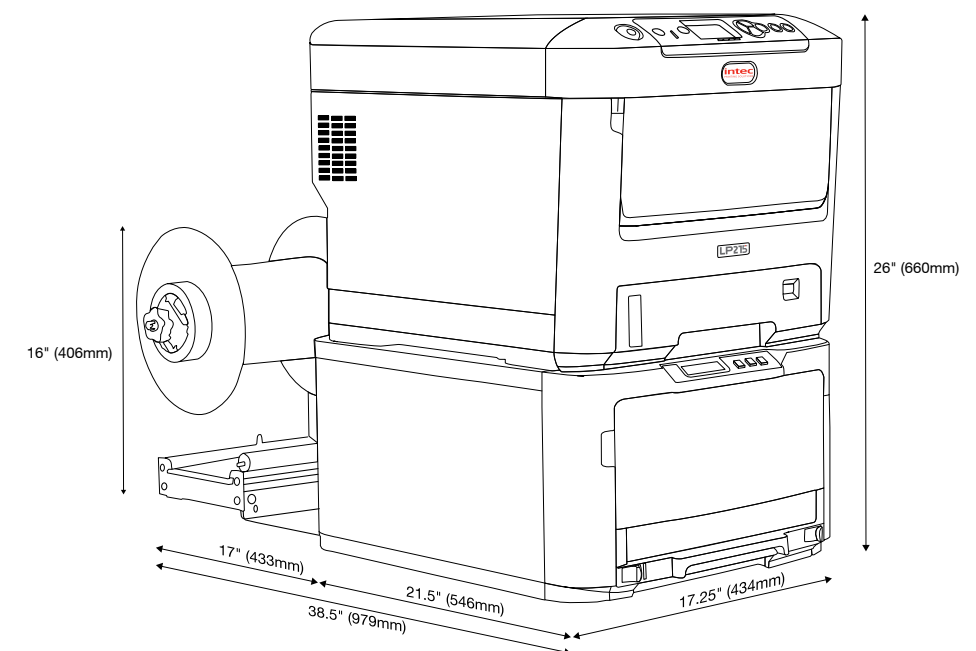
\* optional module not supplied with printer

## LP215 printer specifications

LP215 Specifications	
Print Speed	30ft/min (9.14m/min)
Print Technology	Single Pass 4 Color LED (CMYK)
Printer Processor	CPU: 533 MHz Memory: 512MB Hard Disk: 40GB Internal
Media Width	Maximum Roll Width 8.5" (216mm) Minimum Roll Width: 6.0" (152.4mm)
Print Width	Maximum 8.24" (209.3mm)
Print Length	Up to 700ft (213.4m)
Substrate Types	Self-adhesive label stock. Die-cut label stock. Kiss-cut label stock. Non Die-Cut label stock. Tag stock. Approved polyesters, films and synthetics and GHS
Print Quality	1200 x 600dpi
Toner Supplies	CMY - 11,500 pages at 5%. K - 11,000 pages at 5% (rated according to ISO/IEC 19798 guidelines) - printer ships with a set of starter toners
Consumables	Drums: CMYK - 30,000 pages at 5% (rated according to ISO/IEC 19798 guidelines) Fuser: 60,000 Transfer Belt: 60,000
Feeder System	Input roll maximum diameter: 8" (203mm). Core inside diameter: 3" (76.2mm). Maximum input roll weight: 14lbs (6.35kg) Cut on the fly, auto cut. Auto page width registration. Front panel LCD interface. Web management system torque. Auto adjusting from synchronisation
Rewinder System	Output roll maximum diameter: 8" (203mm). Core inside diameter: 3" (76.2mm). Maximum input roll weight: 14lbs (6.35kg)
Software supplied	EDGE2Print
Cutter	Rotary wheel for end of print-run cutting
Dimensions (HxWxD)	Printer and Feeder: 26" x 17.25" x 21.5" (660mm x 434mm x 546mm). Rewinder: 16" x 19.75" x 19" (406mm x 502mm x 483mm)
Weight	Printer and Feeder: 110lbs (49.9kg). Rewinder: 27.65lbs (12.54kg)
Operating Environment	Temperature: 50 - 89.6 °F (10 °C to 20 °C). Humidity: 20% to 60% RH
Power (Typical)	110 - 127 VAC, 50/60 Hz @ 1150W
Certifications	FCC Class A, CE, cTUVus, CCC
Warranty	12 months standard
System Requirements	CPU Intel Xeon E5-1650 @ 3.20GHz, or Intel Core i7-3930K @ 3.20GHz RAM 12GB RAM (minimum) HD 150GB SATA 10K or 15K RPM OS Windows 7 Professional or Ultimate 64-bit
Options	iVDP Variable data printing software LCF215 Label Finisher LabelPro Slitters S100S and S200S for off-line roll slitting

Intec Printing Solutions Corporation ensures superior quality and resolution, as well as greater consistency and repeatability for the Intec LP215. The Intec LP215 is designed and engineered to operate with approved qualified consumables and the Certified Media Library.

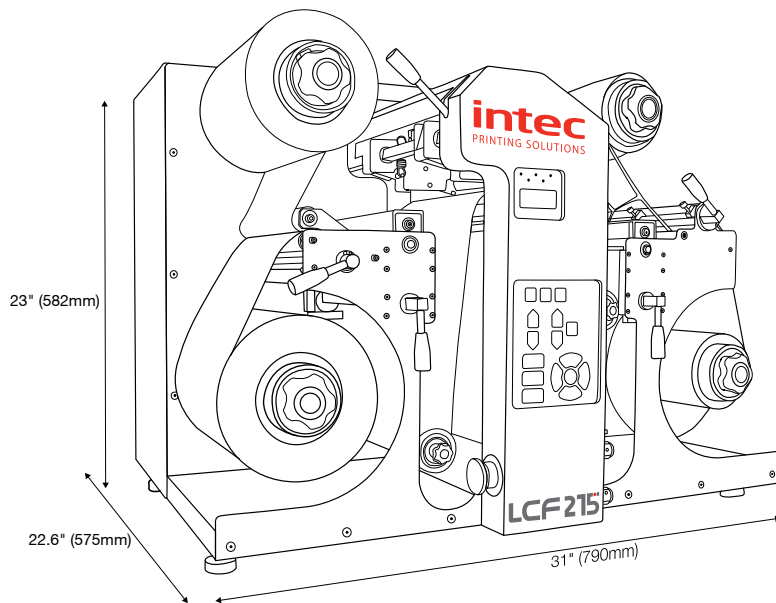
## Device Footprint



## LCF215 finisher system specifications

LCF215 Specifications	
Cut Speed	1320mm per second
Speed	up to 12 feet or 3.5m per minute
Maximum label length	14" (335mm)
Minimum label length	None
Mandrel core diameter	3" (76mm)
Maximum input and output roll diameter	8" (200mm)
Material web width	4" to 8.5" (102mm to 216mm)
Recommended roll length	500 ft (153m)
Make ready waste	4 ft or 1.2m
Adjustment force	50 to 550 grams / 5 grams
Contour cutting	Full HPGL vector cutting compatible with SMARTMark opto-electrical line sensor
Cutting technology	Pivoting carbide tip at 30 (standard), 45 or 60 degrees
Registration marks	1 to 3 marks
Test cut function	Available
Slitting	3 blades as standard, up to 5 blades (optional)
Lamination	Inline lamination when required
Rewind mandrels	One
Substrate types/thickness	TBC
Consumables	Contour cutter knife blades and cutting strips
Cutting management tools	DIRECT-CUT plug in for Ai (CS3 and above) and CorelDraw (Windows PC versions only)
Connectivity	Ethernet 100 Base-T or USB 2.0
Weight	185lbs, 85kg
Dimensions (HxWxD)	23" (582mm), 31" (790mm), 22.6" (575mm)
Power	100-240vac, 900watts
Certifications	CE, ROHS, WEE, HI-POT, FCC
Warranty	12 months standard

## Device Footprint



**intec**  
PRINTING SOLUTIONS

Intec Printing Solutions Corporation  
16011 N. Nebraska Avenue, Lutz, FL 33549 USA  
Tel: +1 813-949-7799 Fax: +1 813-949-7886  
[www.intecprinters.com](http://www.intecprinters.com)